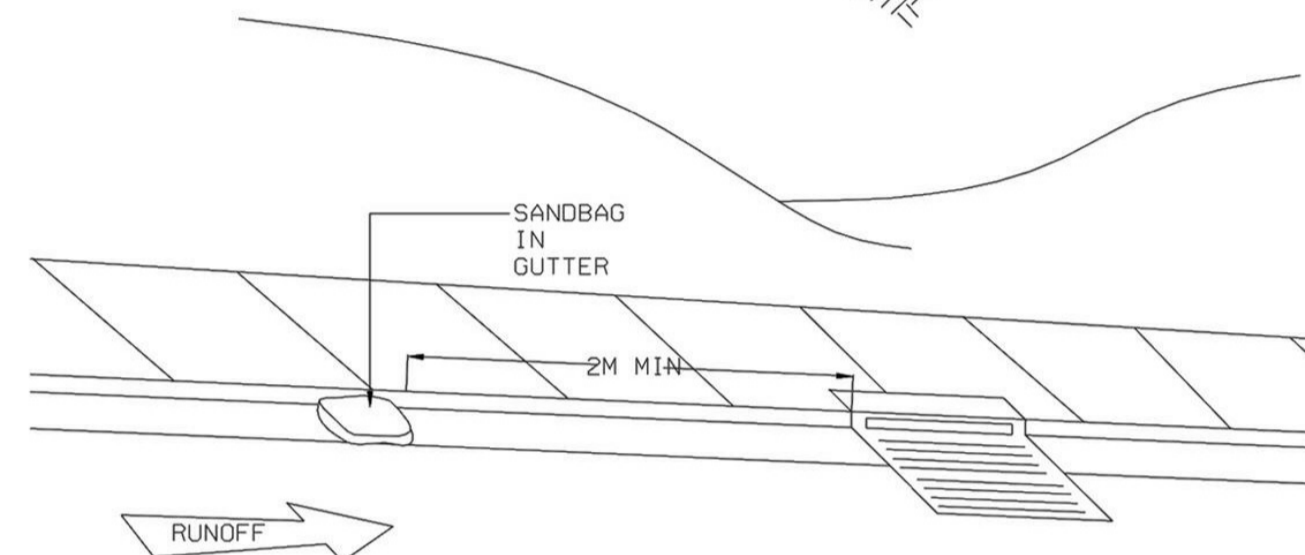
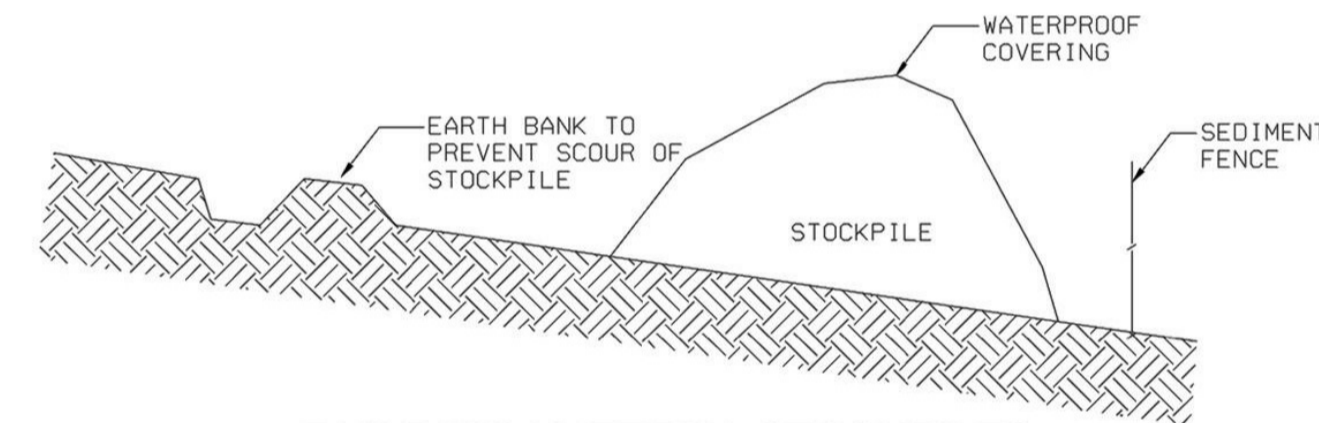


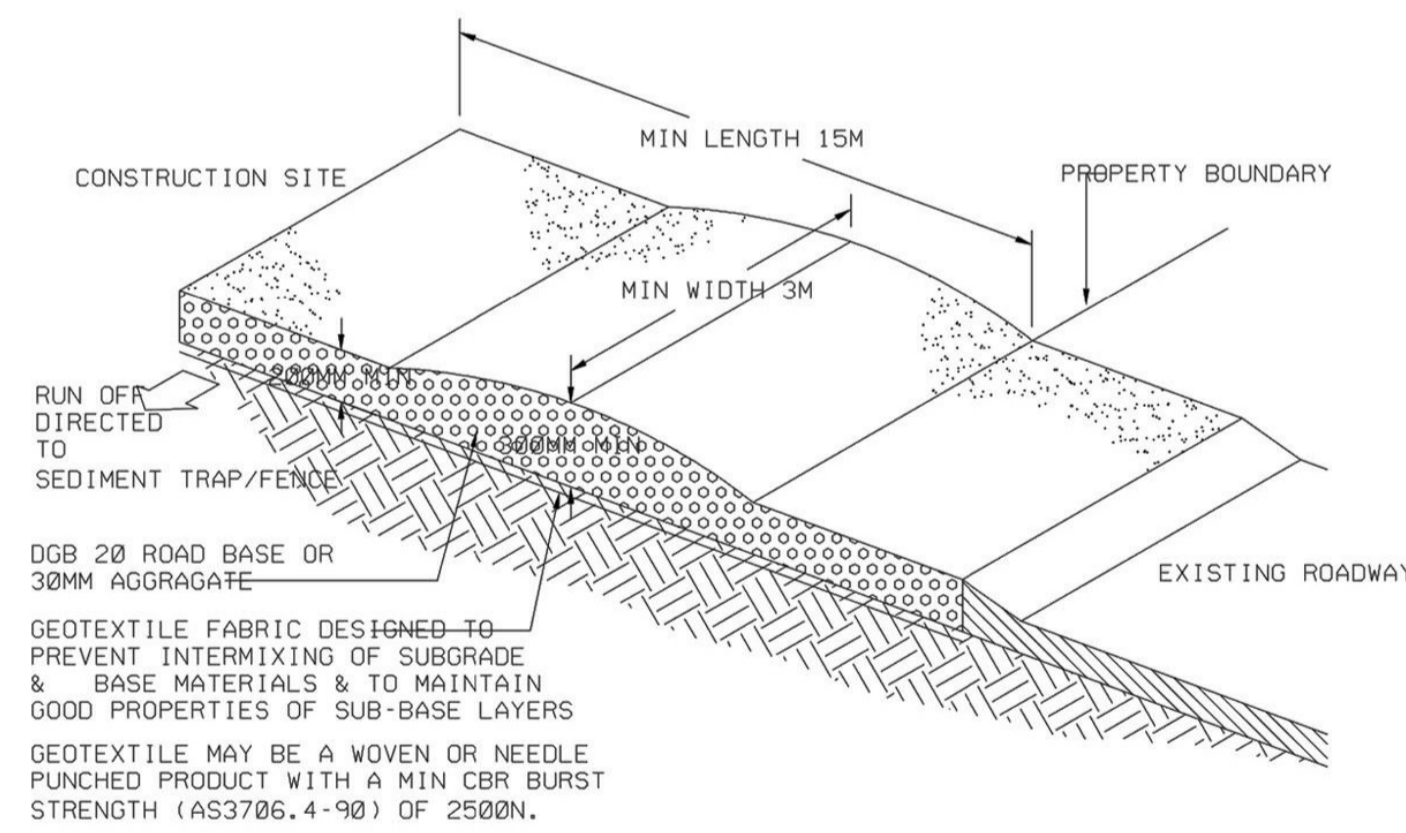
TYPICAL DETAIL OF A FILTER FENCE
 AROUND THE COLLECTION PITS WITH SUBMERSIBLE PUMP
 PUMP DISCHARGE TO DRAIN TO NEAREST STORMWATER GRATE DOWNSLOPE OF THE CONSTRUCTION ACTIVITY ADEQUATELY PROTECTED BY STAWBALES WRAPPED IN GEOTEXTILE FABRIC.



SANDBAG KERB SEDIMENT TRAP



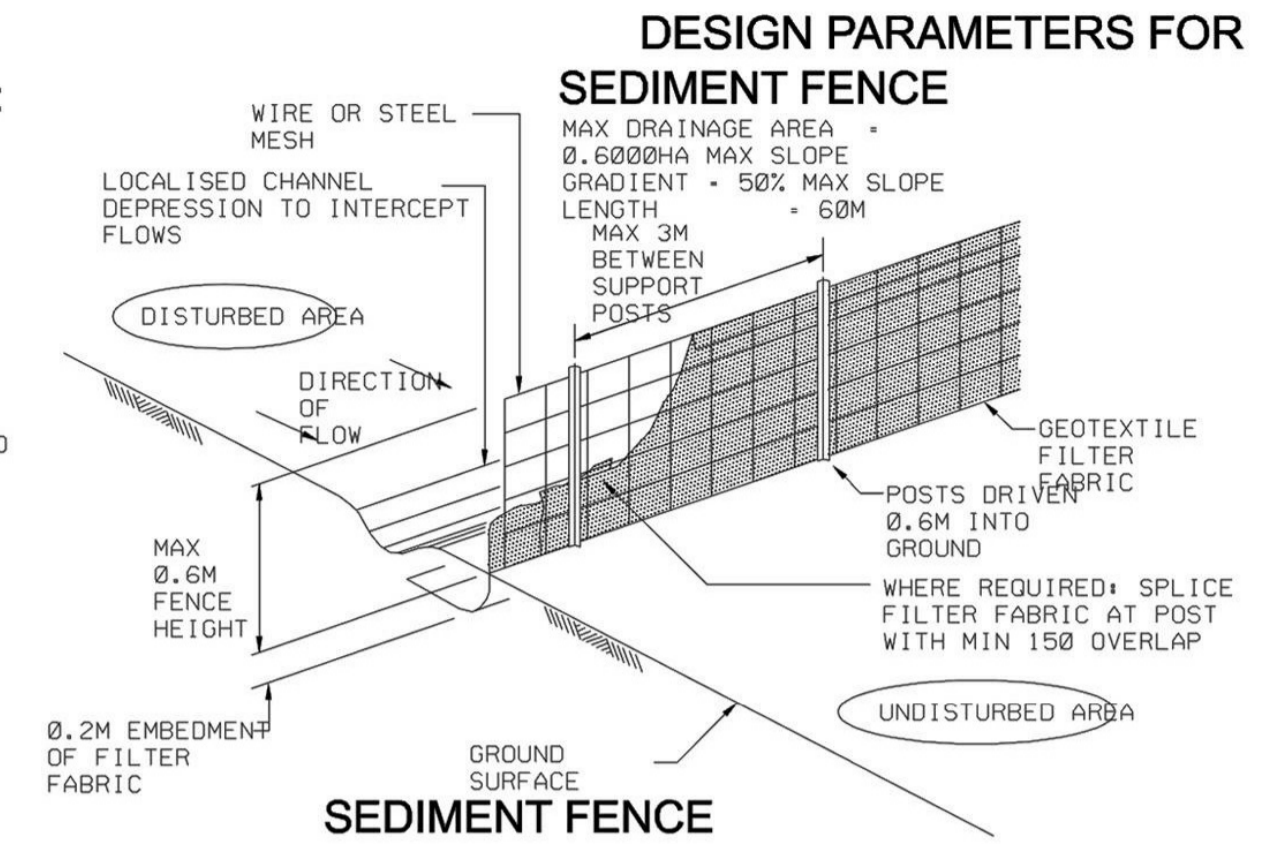
BUILDING MATERIAL STOCKPILES



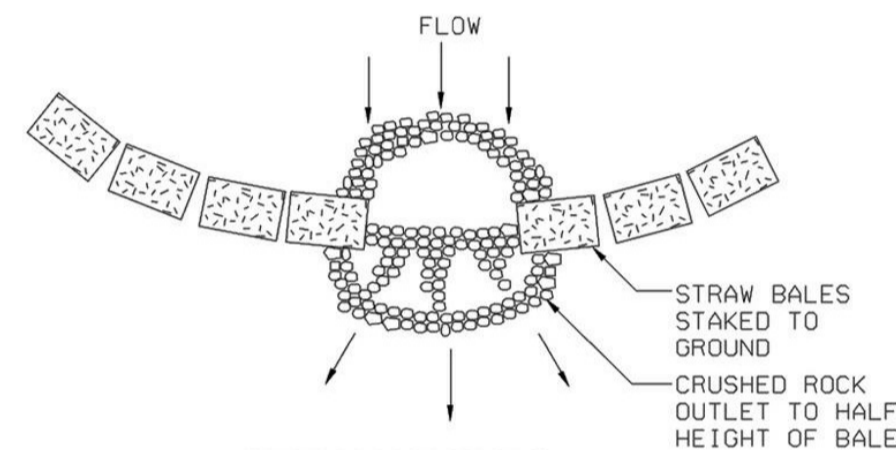
STABILISED SITE ACCESS

SOIL & WATER MANAGEMENT NOTES:

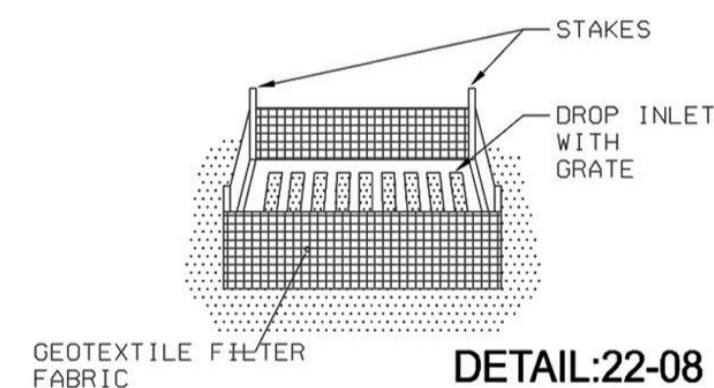
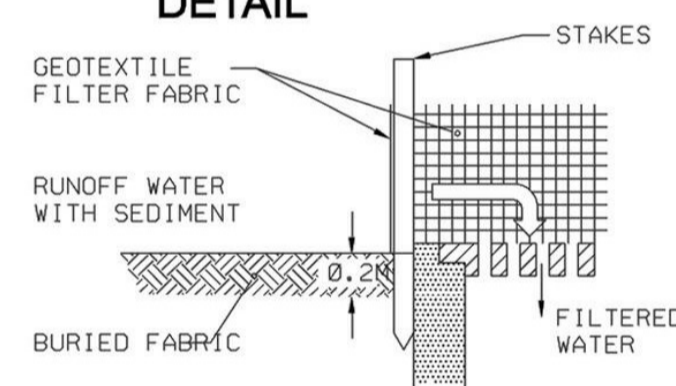
- REFER TO DETAIL D3 FOR CONSTRUCTION OF SEDIMENT FENCE.
- ALL PITS & PIPEWORK ASSOCIATED WITH PROPOSED DRAINAGE SYSTEMS SHALL BE KEPT FREE OF SOIL, WATER & DEBRIS FOR THE DURATION OF THE CONSTRUCTION WORKS.
- ALL LOOSE IMPORTED FILL AND EXCAVATED MATERIAL SHALL BE STOCKPILED AS FAR AS POSSIBLE FROM SEDIMENT FENCES PRIOR TO FINAL PLACEMENT, COMPACTION OR REMOVAL FROM SITE.
- EXCESSIVE SEDIMENT BUILDUP SHALL BE AVOIDED BY REGULAR MAINTENANCE OF SEDIMENT FENCES.
- WHERE APPLICABLE, APPROVED LANDSCAPING & REVEGETATION OF DISTURBED AREAS SHALL COMMENCE AT THE EARLIEST OPPORTUNITY AFTER COMPLETION OF EARTHWORKS OPERATIONS.



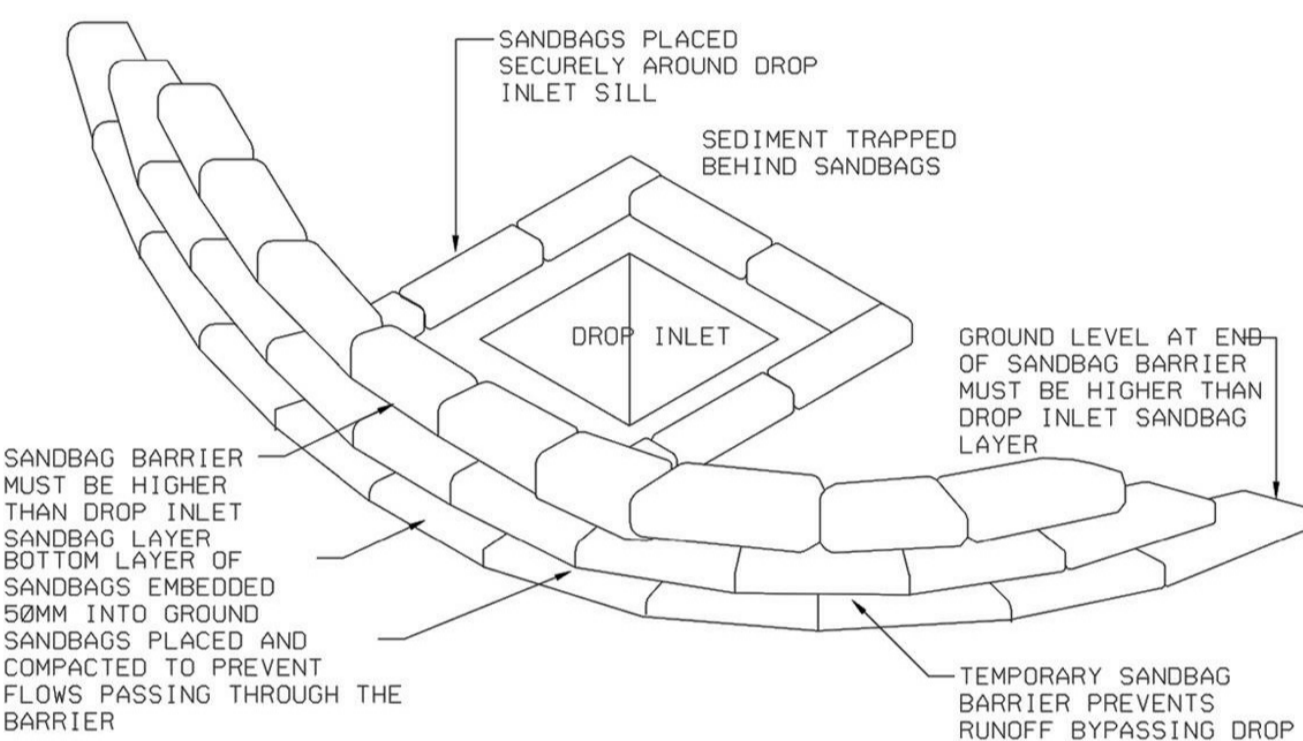
CONSTRUCTION OF SEDIMENT FENCE AND ANY OTHER SEDIMENT CONTROL MEASURES SHALL BE IN ACCORDANCE WITH THE URBAN EROSION AND SEDIMENT CONTROL HANDBOOK PUBLISHED BY THE DEPARTMENT OF CONSERVATION AND LAND MANAGEMENT (AVAILABLE FROM THE DEPARTMENT OF LAND AND WATER CONSERVATION)



STRAW BALES DETAIL



DETAIL:22-08
GEOTEXTILE FILTER FABRIC DROP INLET SEDIMENT TRAP



SANDBAG BARRIER DROP INLET

SEDIMENT RUN-OFF CONTROL NOTES:

- ALL WORKS SHALL BE GENERALLY CARRIED OUT IN ACCORDANCE WITH:
 - LOCAL AUTHORITY REQUIREMENTS.
 - EPA - POLLUTION CONTROL MANUAL FOR URBAN STORMWATER.
 - DEPARTMENT OF CONSERVATION AND LAND MANAGEMENT MANUAL - "URBAN EROSION & SEDIMENT CONTROL".
- EROSION & SEDIMENT CONTROL DRAWINGS NOTES ARE PROVIDED FOR THE WHOLE OF THE WORKS. SHOULD THE CONTRACTOR STAGE THESE WORKS THEN THE DESIGN MAY REQUIRE TO BE MODIFIED. VARIATION TO THESE DETAILS MAY REQUIRE TO BE APPROVED BY THE RELEVANT AUTHORITIES.
- MAINTAIN ALL EROSION AND SEDIMENT CONTROL DEVICES TO THE SATISFACTION OF THE SUPERINTENDENT AND THE LOCAL AUTHORITY.
- WHEN STORMWATER PITS ARE CONSTRUCTED PREVENT SITE RUNOFF ENTERING THE PITS UNLESS SILT FENCES ARE ERECTED AROUND PITS.
- MINIMISE THE AREA OF THE SITE BEING DISTURBED AT ANY ONE MOMENT.
- PROTECT ALL STOCKPILES OF MATERIALS FROM SCOUR & EROSION. DO NOT STOCKPILE LOOSE MATERIAL IN ROADWAYS, NEAR DRAINAGE PITS OR WATER WATERCOURSES.
- ALL SOIL AND WATER CONTROL MEASURES ARE TO BE PUT BACK IN PLACE AT THE END OF WATCH WORKING DAY, AND MODIFIED TO BEST SUIT SITE CONDITIONS.
- CONTROL WATER FROM UPSTREAM OF THE SITE SUCH THAT IT DOES NOT ENTER THE DISTURBED AREA.
- ALL CONSTRUCTION VEHICLES SHALL ENTER & EXIT THE SITE VIA THE TEMPORARY CONSTRUCTION ENTRY/EXIT.
- ALL VEHICLES LEAVING THE SITE SHALL BE CLEANED AND INSPECTED BEFORE LEAVING.
- CLEAN OUT ALL EROSION AND SEDIMENT CONTROL DEVICES AFTER EACH STORM EVENT.
- HOSE TAPS TO BE FITTED WITH BACK FLOW PREVENTION IN ACCORDANCE WITH AS3580.

STRATHFIELD COUNCIL RECEIVED

DA2022.06

DATE 24 January 2022