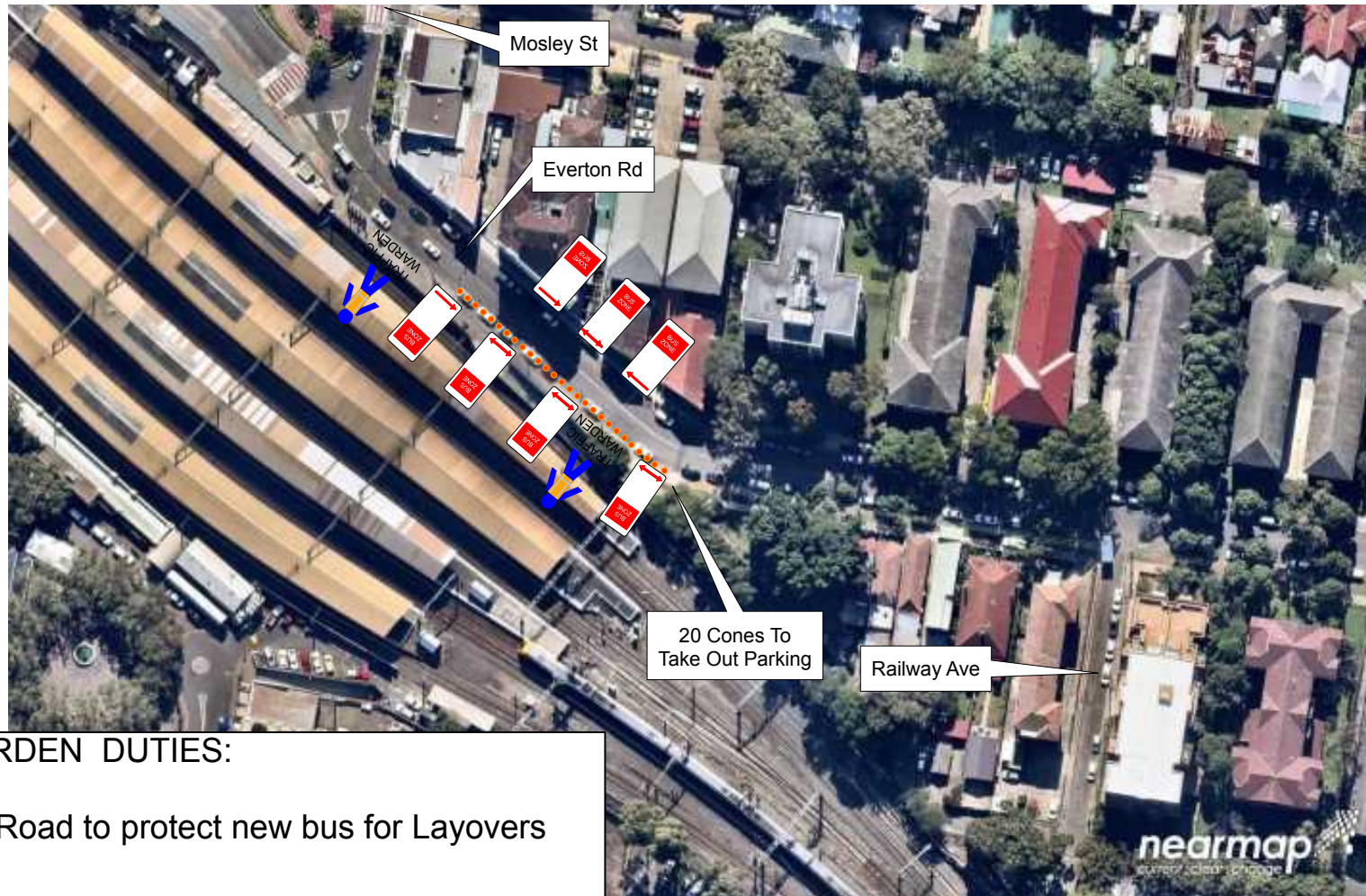



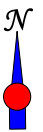


SYDNEY TRAINS

Location - **Everton Rd, Strathfield**Work Scope - **Bus Warden****TRAFFIC WARDEN DUTIES:**

* 2 in Everton Road to protect new bus for Layovers

 PLAN NOT TO SCALE	Author : A KELLY PREPARED BY Ashley Kelly CERT NO: 2273014622 TMP No: BUSMAP-Strathfield - 1 x TW	Implemented By Name:..... Date:..... Signed:..... Cert No:.....	Comments: 1. TCP Designed as a guide only. Team leader to Select & Modify TCP to suit. 2. All signage is to be removed on completion of the works. 3. Sign distances may vary due to obstructions, driveways etc. 4. Traffic Controllers are to manage pedestrians as well. This plan is in accordance with AS 1742.3 Traffic Control Devices at worksites and The RTA "Traffic Control at worksites" manual. 4.0	PROJECT 	WOLLONGONG Phone: (02) 42727133 Fax: (02) 42727134 SYDNEY Phone: (02) 9631 7962 Fax: (02) 9631 7963 WEB www.ddtraffic.com.au  D&D TRAFFIC MANAGEMENT DOES NOT ACCEPT LIABILITY FOR IMPLEMENTATION OF THIS TCP IF NOT DIRECTLY INVOLVED IN ITS IMPLEMENTATION	
--	---	---	--	---	--	---